

LAKEFIELD OF THE LANDINGS AT WELLINGTON P.U.D. - PLAT 2A

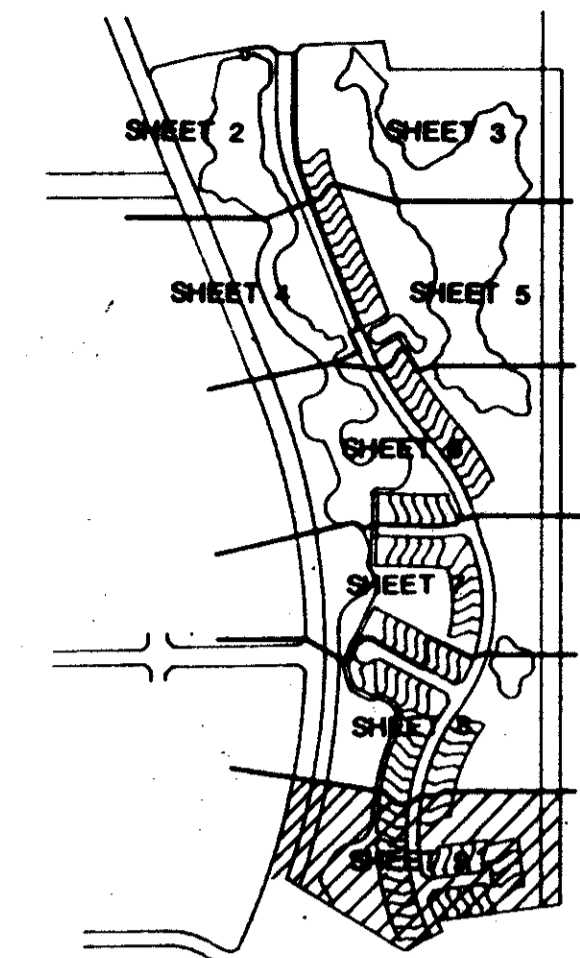
IN PART OF SECTION 7 AND 18, TOWNSHIP 44 SOUTH, RANGE 41 EAST

PALM BEACH COUNTY, FLORIDA
IN NINE SHEETS SHEET NO. 9

GEE & JENSON
ENGINEERS - ARCHITECTS - PLANNERS, INC.
WEST PALM BEACH, FLORIDA
AUGUST 1989

40 0 40 80 120 160
SCALE IN FEET SCALE: 1" = 40'

105



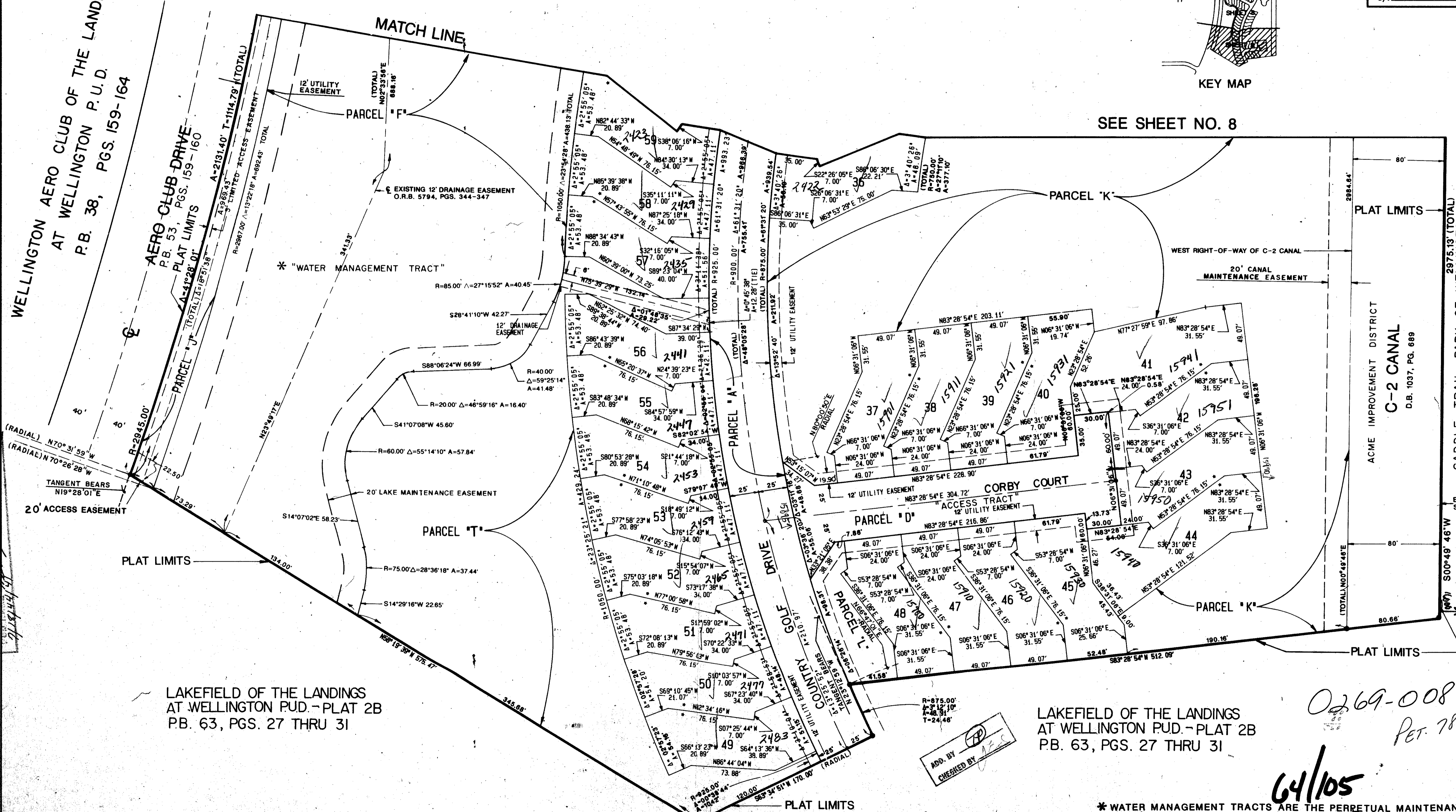
STATE OF FLORIDA
COUNTY OF PALM BEACH
This plat was filed for
record at _____ M. this _____ day
of _____ 1989, and duly
recorded in Plat Book No. _____
on Pages _____ thru _____.

JOHN B. DUNKLE
Clerk Circuit Court
By: _____ D.C.

WELLINGTON AERO CLUB OF THE LANDINGS
AT WELLINGTON P.U.D.
P.B. 38, PGS. 159-164

AERO CLUB DRIVE
P.B. 53, PGS. 159-160

SEE SHEET NO. 8



LAKEFIELD OF THE LANDINGS
AT WELLINGTON P.U.D. - PLAT 2B
P.B. 63, PGS. 27 THRU 31

LAKEFIELD OF THE LANDINGS
AT WELLINGTON P.U.D. - PLAT 2B
P.B. 63, PGS. 27 THRU 31

0269-008
PER. 78-287

64/105

Subdivision of the Landings at Wellington
SUBDIVISION of the Landings at Wellington
BOOK 64 PAGE 105
PLAT 2A RE
78-287
7/18/89

COMPUTED P.W.L./C.A.P.
DRAWN P.W.L./C.A.P.
CHECKED W.J.J.
APPROVED J.H.D.

NOTE: ALL LINES ARE RADIAL UNLESS OTHERWISE NOTED !

* WATER MANAGEMENT TRACTS ARE THE PERPETUAL MAINTENANCE TRACTS OF THE LAKEFIELD OF THE LANDINGS AT WELLINGTON P.U.D. ENGINEERS - ARCHITECTS - PLANNERS, INC.

LAKEFIELD OF THE LANDINGS AT WELLINGTON P.U.D. - PLAT 2A